

SONY®

Video Microscope
TW-TLNS8

TECHNOLOOK

Inspection without fatigue, No more eye strain or neck pain, High resolution image for inspection and group viewing, Zoom magnification 8x-80x, Large work area for rework & assembly, Take a digital picture to PC, Perform Measurement.

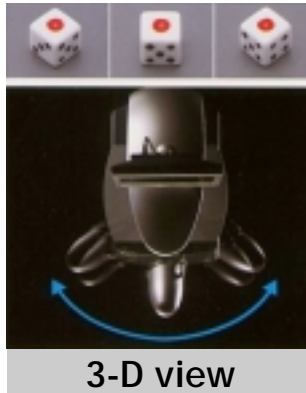


CALTEX SCIENTIFIC Tel: 949-788-0101 Fax: 949-788-0202
192-T Technology Dr. Irvine, CA 92618

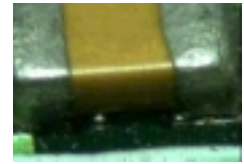
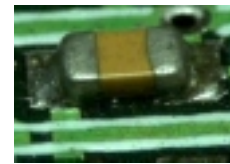
email: info@caltexsci.com
www.sonyTechnoLOOK.com

TW-TLNS8 Features

- 60 degree Oblique angle viewing with superb visual depth
- Rotating camera head allows viewing from various angles to avoid blind spots
- Super Depth of Field with iris control
- Zoom 8x to 80x on 7" LCD or 20x-200x on video monitor
- Long clearance for REWORK and easy handling
- Large work area approx. 25" wide
- Long Working height 8"-18" and adjustable base heights.
- All-In-One design with built-in non-glare 7" LCD display
- Laser Pointer for pinpointing exact location of subject
- Cold cathode fluorescent lamp with little heat
- S-Video and video outputs to connect with TV monitor
- Connecting to computer for video measurement & email
- High resolution image for ergonomic inspection



ZOOM



Expandability



Large screen display



Photo printout



Connect to PC for images capture, annotate, archive, email, print & measurement



Laser/Inkjet printer

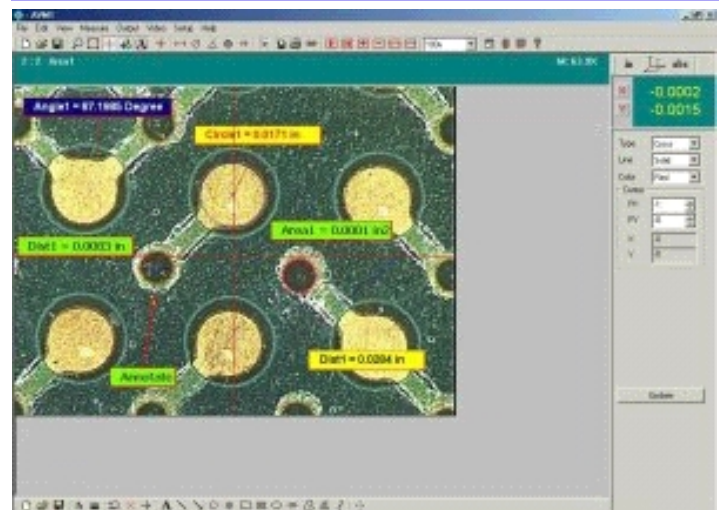


Measurement Software
VMS-1

Specifications

Model	TW-TLNS8
Video Signal	NTSC Color
CCD	1/4 inch, 410,000 pixels
Lens	10X ratio, manual zoom lens, 0.24 to 2.4 optical magnification
Magnification	8X to 80X on integral LCD, 16x to 160x on 14" video monitor
Focus	Manual
Iris	Manual
LCD monitor	7-inch TFT Liquid Crystal Display, 480 (H) x 234 (V) pixels (16:9 display mode) 360 (H) x 234 (V) pixels (4:3 display mode)
Illumination	Cold cathode tube
Laser pointer	Class 1 (wavelength: 650 nm), Spot diameter 2 mm or less
Video input	Composite video input: pin jack (x1)
Video output	S-video output: 4-pin mini DIN (x1), Composite video output: pin jack (x1)
Power requirement	DC 12V (AC 100 - 240V, 50/60 Hz AC adapter)
Power consumption	12V DC, 1.8 A (22W)
Operating temperature	0°C to 40°C (32°F to 105°F)
Storage temperature	-20°C to 60°C (-5°F to 140°F)
Mass	Approx. 10 kg (22 lbs)
Work area dimension	25" Width x 1" to 5" Height x Unlimited Depth
Working distance	8" - 18"
Supplied accessories	AC adapter, AC power cable, Lens cap, Lens filter

Measurement Software



Contact: **CALTEX SCIENTIFIC**
 192-T Technology Dr.
 Irvine, CA 92618
 Tel. 949-788-0101 Fax. 949-788-0202
 Web: www.SonyTechnoLOOK.com
 Email: info@caltexsci.com