

SONY®

TECHNOLOOK

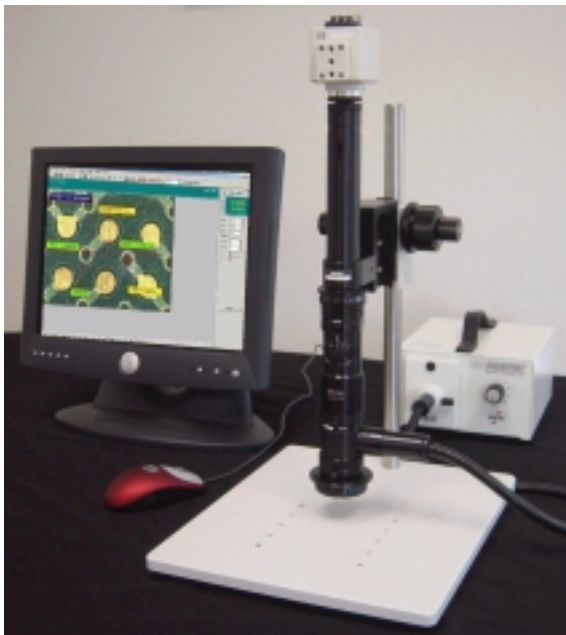
Video Microscope System



TW-TL1S (4x-40x) & TW-TL10S (10x-100x)
All-in-one design with 45° oblique view swivel head, high-resolution 7" LCD, laser pointer and sliding stage, video output.



TW-TL5M (4x-40x) & TW-TL10M (10x-100x)
Memory Stick & USB model for image capture & download to PC. Including all features of TW-TL1S/10S
All-in-one design with 45° oblique view swivel head, high-resolution 7" LCD, laser pointer and sliding stage.



VZM-200 (30x-200x)
2D XY digital-video measurement inspection system for micro devices, tubing, medical parts.
expandable zoom 15x-400x, 120x-1200x, 3 μ accuracy



TW-TLNS8 (8x-80x)
Large work area 25" wide, Long working height 12"-17" and adjustable base heights.
All-in-one ergonomic inspection system with 60° oblique view swivel head, 7" LCD, laser pointer.

Applications

- Ergonomic inspection, rework, assembly and QC
- Group viewing, training and marketing presentation
- Recording images to computer for internet email
- Documentation of defects, email images
- Medical devices, SMT, laboratory analysis

Features

- 45 degree Oblique angle viewing with superb visual depth
- Rotating camera head allows viewing from various angles
- Super Depth of Field with Iris control for high resolution images
- Zoom 4x to 40x on 7" LCD for model 1S, 10x-100x for model 10S
- Long clearance for REWORK and easy handling
- Large workspace with Sliding Stage
- Compact All-In-One design with built-in non-glare 7" LCD display
- Laser Pointer for pinpointing exact location of subject
- Cold cathode fluorescent lamp with little heat
- S-Video and NTSC outputs to connect with large screen TV or video capture board and PC for internet email
- Memory Stick for taking picture, USB for image transfer (M model)

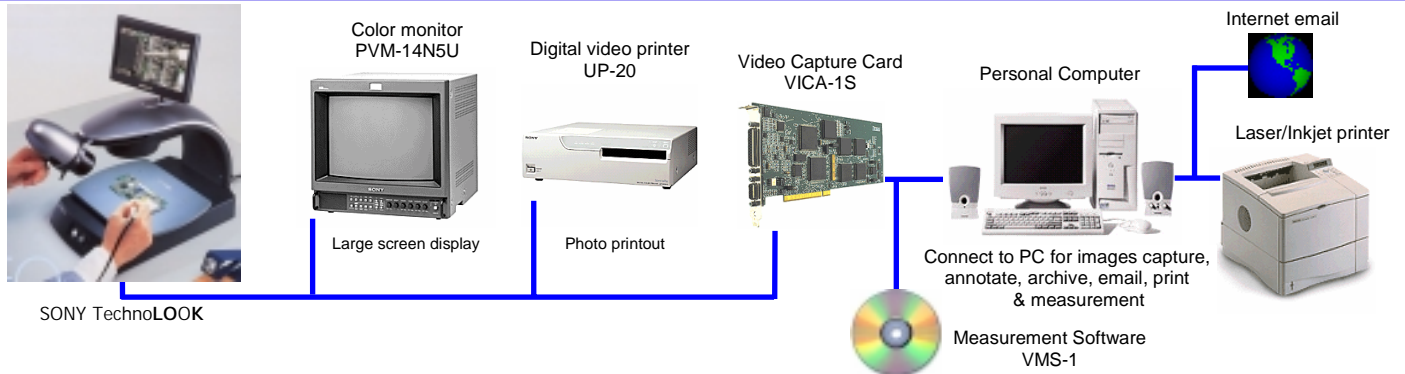
SONY



TECHNOLOOK

TW-TL5M 40X memory stick
TW-TL10M 100X memory stick

Expandability

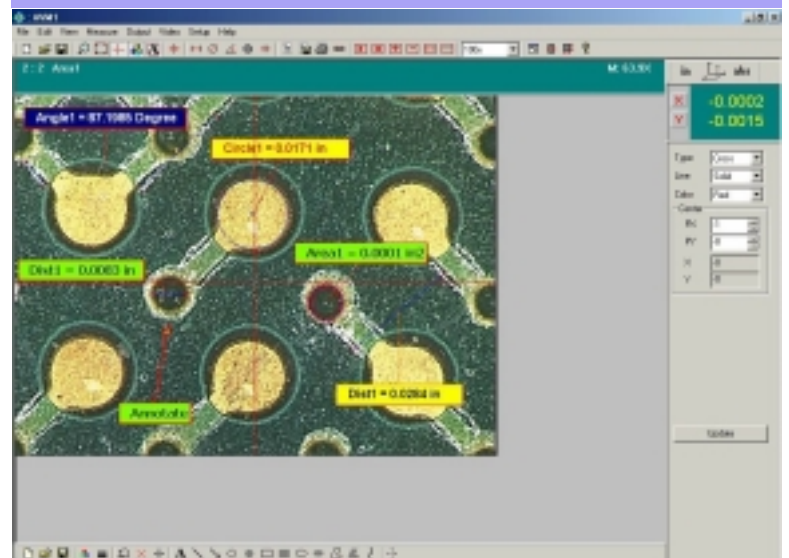


Specifications

Power requirements	AC 100-240V, 50/60Hz
Power consumption	1.8A
Operating temperature	0°C to 40°C (32°F to 105°F)
Storage temperature	-20°C to 60°C (-5°F to 140°F)
Mass	6.0kg (13 lb 4 oz)
Video signal system	NTSC color
CCD camera resolution	410,000 pixels
Zoom	Ratio: 10x, Manual
On-screen magnification	Minimum object distance: 105 mm Approx. 4x to 40x on integral LCD monitor (1S/5M) Approx. 10x to 100x on integral LCD monitor (10S/10M) Max. 4.8(W) x 3.6(H) mm on the supplied table
Camera sweep range	Manual
Focus	Manual
Iris	Red Pointer
Positional adjustment	7" TFT liquid-crystal display
LCD monitor	fluorescent lamp
Lighting	Pin jack (x1)
Video input	Pin jack (x1)
Video output	4-pin mini DIN (x1)
S-video output	AC power cable (1.8m)
Supplied accessories	AC adapter (x1) Table: 250(W) x 196(D) x 7.5(H) mm Lens cap (x1), Lens filter (x1) S-video cable YC-20V (2m) Video cable VMC-20V (2m) Color monitor (Trinitron PVM series)
Optional accessories	Medial converter (video capture board)
Recommended peripherals	Digital video printer Digital capture deck

Copyright ©2000 Caltex Scientific Inc. All rights reserved.
Reproduction in whole or in part without written permission is prohibited.
Features and specifications are subject to change without notice.
TECHNOLOOK is a registered trademark of Sony Corporation.
Sony is a registered trademark of Sony Corporation.

Measurement Software



Contact: **CALTEX SCIENTIFIC**
192-T Technology Dr.
Irvine, CA 92618
Tel. 949-788-0101 Fax. 949-788-0202
Email: info@caltexsci.com
Web: www.SonyTechnoLOOK.com